

腸道健康檢查計劃內容和收費
Gut Health Programme Details and Fee

醫生諮詢 (檢測前後諮詢)
Doctor consultation (pre-test and post-test consultation)

M3 大腸癌檢測 M3 CRC test

收費 (港幣) Fee (HKD) \$3,500

免責聲明：
此檢測不是診斷測試，測試結果應謹慎解讀。暫時尚未確定應每隔多久重覆接受此檢測。**
以上資訊僅供參考，它不能代替醫生或專業醫護人員的建議。如果你對以上資訊有任何疑問，請諮詢你的醫生。

Disclaimer:
The Test is not a diagnostic test. The test result should be interpreted with caution. Precise screening interval for this follow-up has not been established.**
Information in this webpage is for reference only. Information in this webpage is not intended to serve as a substitute for professional medical advice. If you have any question regarding the above information, please seek advice from your doctor.

**資料來源: 精進微生物科技有限公司 Source : GenieBiome Limited



Your Health 為你健康
Our Purpose 盡力盡心



香港中文大學醫院 CUHK Medical Centre

地址 Address :

香港新界沙田澤祥街9號香港中文大學醫院11樓
11/F, CUHK Medical Centre, 9 Chak Cheung Street,
Shatin, New Territories, Hong Kong

服務時間 Service Hours :

星期一至五 9:00-17:00
星期六 9:00-13:00
星期日及公眾假期休息
Monday to Friday 9:00 AM - 5:00 PM
Saturday 9:00 AM - 1:00 PM
Closed on Sunday and Public Holidays

電話 Telephone :

保健中心 Wellness Centre : (852) 3946 6188
一般查詢 General Enquiries : (852) 3946 6888

電郵 Email : general@cuhkmc.hk
網址 Website : www.cuhkmc.hk

香港中文大學醫學中心有限公司「香港中文大學醫院」保留更改以上所有條款及細則的權利而毋須另行通知。如有任何爭議，香港中文大學醫學中心有限公司「香港中文大學醫院」保留最終決定權。本文一律以英文版本為準。

CUHK Medical Centre Limited retains the right to amend any of the above terms and conditions without prior notice. In case of dispute, CUHK Medical Centre Limited reserves the right of final decision. If any discrepancy arises between the English version and the Chinese version, the English version shall prevail.

腸道健康檢查
GUT
Health Programme



腸道健康檢查計劃 Gut Health Programme

腸道健康檢查計劃（「計劃」）是針對關注腸道健康人士而設的檢測服務。計劃採用香港中文大學醫學院研發、全球首創透過檢測糞便的細菌基因(M3)的偵測方法*（「此檢測」）。此非入侵性檢測方法除了能偵測早期大腸癌之外，亦能有效預測大腸瘻肉復發。*

Gut Health Programme (Programme) is a screening service designed for people who have concern about gut health. The Programme adopts the world's first faecal "bacterial gene markers" test (M3)* (Test) developed by the Faculty of Medicine at The Chinese University of Hong Kong. This non-invasive test can detect colorectal cancer (CRC) early and can also be applied to the prediction of polyp recurrence.*



計劃特色 Programme Features

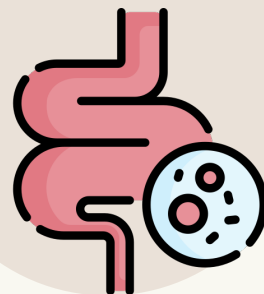
✓ 非入侵性檢測**
Non-invasive test**

只需糞便樣本
Only stool sample is required

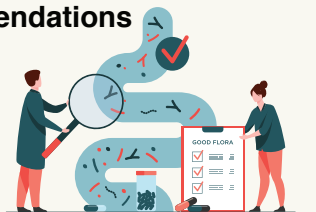


透過檢驗糞便的細菌基因，預測大腸癌、大腸瘻肉及大腸瘻肉復發的風險

Through "bacterial gene markers" test, predict the risk of having CRC, adenoma and adenoma recurrence.



✓ 由醫生解釋檢測結果並提供飲食建議
Doctor will explain test results and provide dietary recommendations



*資料來源：香港中文大學醫學院 Source: The Faculty of Medicine at The Chinese University of Hong Kong

**資料來源：精進微生物科技有限公司 Source: GenieBiome Limited

